

PARTS CATALOG



Table of Contents

AutoFil Parts1

Pneumatic Tire Pump Parts9



Pathway Polymers
2003 Curtain Pole Road
Chattanooga, TN 37406
800.251.7642
www.pathwaypolymers.com

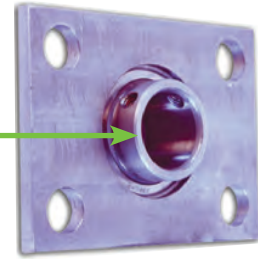
Parts listed in this catalog are the most commonly ordered. If you need a part that you don't see listed in this catalog, please contact your Region Manager or Pathway Polymers.

AutoFil Parts



Pathway Polymers Parts Catalog

Part Name: AutoFil Timken Fafnir Ball Bearing
Part #: BRG006



Part Name: AutoFil Bearing Cage
Part #: BRG007
Description: Bearing Cage 0022-00480 Rev. B 1 piece



Part Name: AutoFil Injector Barrel 1 piece
Part #: BRL002
Description: 002-074



Part Name: AutoFil Small Tire Plug
Part #: Bullet001
Description: Fits 1/8" needles



Part Name: AutoFil Large Tire Plug
Part #: Bullet002
Description: Fits 1/4" needles



Part Name: AutoFil Grinder Hopper Cover
Part #: COV001
Description: 002-013





Part Name: AutoFil Fill Gun Adapter
Part #: FILADA002
Description: Big Bore, 220 valve



Part Name: AutoFil P-C Design Fill Gun
Part #: FILLGUN01



Part Name: AutoFil Fill Gun Plunger
Part #: FILLGUNPLUN02



Part Name: AutoFil Fill Gun Plunger Housing
Part #: FILLGUNPLUNHOU01
Description: Plunger Housing



Part Name: AutoFil Fluffer Bar 002-0080
Part #: FLUFBAR



Part Name: AutoFil 200 PSI Gauge
Part #: GAU001

Pathway Polymers Parts Catalog

Part Name: AutoFil Guage 3000 PSI
Part #: GAU002



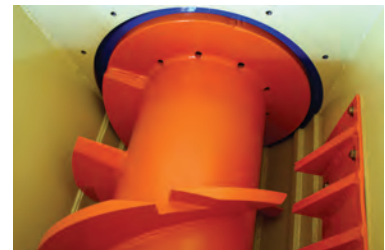
Part Name: Fill Gun Gauge assembly
w/ New PB2-L Valve
Part #: GAUASMB03



Part Name: AutoFil Diaphragm Seal for Pressure Gauge
Part #: GAUSEAL01



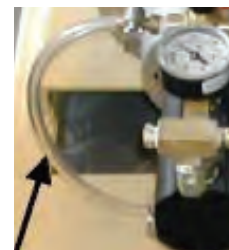
Part Name: AutoFil Grinder Hopper 002-0012
Part #: HOP001



Part Name: 1 inch Vinyl Hose, Braid Reinforced
Part #: HOSVINYL001



Part Name: 3/8 ID x 1/2" OD Vinyl A/B Hose
Part #: HOSVINYL002





Part Name: AutoFil Small Diameter Needle
Part #: NEEDLE01



Part Name: AutoFil Large Diameter Needle
Part #: NEEDLE02
Description: 4 inches long



Part Name: AutoFil Large Diameter Needle
Part #: NEEDLE03
Description: 6 inches long



Part Name: AutoFil Large Diameter Needle
Part #: NEEDLE04
Description: 8 inches long



Part Name: O/I IO-1224 Interface
Part #: PLCOPI001



Part Name: AutoFil Tamden Pump
Part #: PUMTAM001

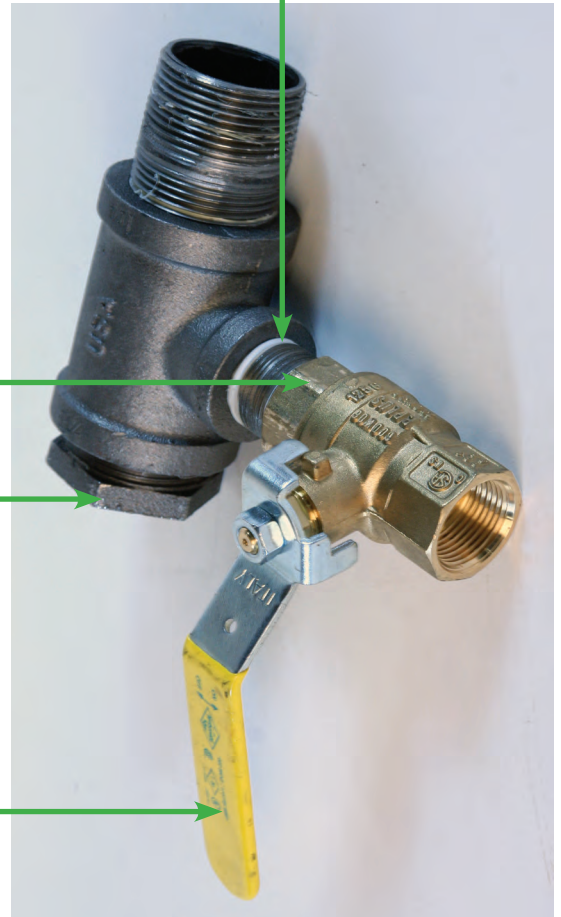
Pathway Polymers Parts Catalog

Part Name: Pipe Bushing
Part #: PIPBUS011
Description: 1 1/4" x 3/4"

Part Name: Pipe Nipple
Part #: PIPNIP006
Description: 3/4 inch

Part Name: Pipe Bushing
Part #: PIPBUS001
Description: 1 1/4" x 1 inch Black

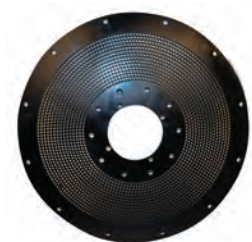
Part Name: Valve Ball
Part #: VAL005
Description: 3/4" 600 WOG



Part Name: AutoFil Injector Screw 002-0075
Part #: ROTINJ002



Part Name: AutoFil Screen Plate 02-0085
Part #: SCRPLT001
Description: Screen Plate 1 piece





Part Name: Bearing Spacer Set
Part #: SPACERS001



Part Name: Stator Injector 9002-0059
Part #: STA001
Description: 16 pieces



Part Name: Static Mixer Elements
Part #: STAMIX001



Part Name: Tube 1/2" x 8"
Part #: STAMIXAS001
Description: A/B Mixer Tube



Part Name: AutoFil Torque Hub 26:1
Part #: TORHUB001



Part Name: AutoFil Brass Check Valve
Part #: VAL003
Description: 1/4" NPT 1 piece

Pathway Polymers Parts Catalog

Part Name: AutoFil 1/2" All Thread

Part #: ALL001

Description: 4 pieces



Part Name: AutoFil Coupling Insert

Part #: COUINS002

Description: L/AL100



Part Name: AutoFil 2" FPT x MEMO 2" OD Plastic

Part #: COUHOS006



Pneumatic Tire Pump Parts



Pathway Polymers Parts Catalog

Part Name: 3/4" Plastic Element
Part #: 1001



Part Name: Flush-free Mixing Block Complete Assembly
Part #: 1043 A



Part Name: Safety Handle (flush free)
Part #: 1052



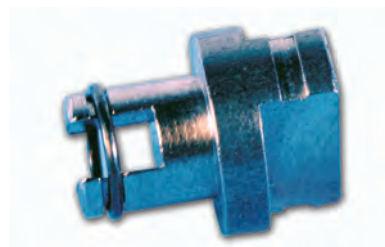
Part Name: FP-134 Large Core Remover
Part #: 8448



Part Name: FP-146 Teflon Washer
Part #: 8481

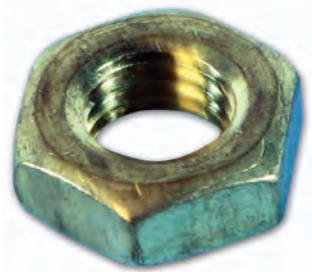


Part Name: FP-153 Collet Adapter
Part #: 8485

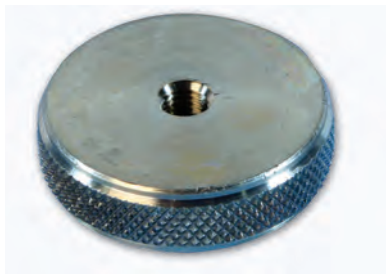




Part Name: FP-154 Stem and Collet
Part #: 8486



Part Name: FP-145 Lock Nut
Part #: 8487



Part Name: FP-144 Hand Wheel
Part #: 8488



Part Name: FP-143 O-Ring
Part #: 8489



Part Name: FP-142 Stem Sealing Nut
Part #: 8490



Part Name: FP-141 Adapter Body
Part #: 8491

Pathway Polymers Parts Catalog

Part Name: PF-140 Stem ILet
Part #: 8492



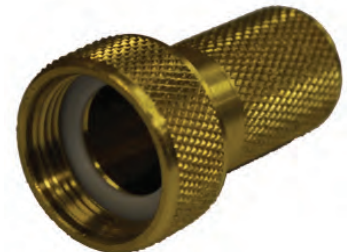
Part Name: FP-139 Gasket
Part #: 8493



Part Name: FP-138 Ejector Union Steel
Part #: 8494



Part Name: Ejector Union Brass
Part #: 8498



Part Name: 310 Calcium Gun/Valve Adapter
Part #: 8499



Part Name: 0-160 PSI guage back mount 7200
Part #: 9800

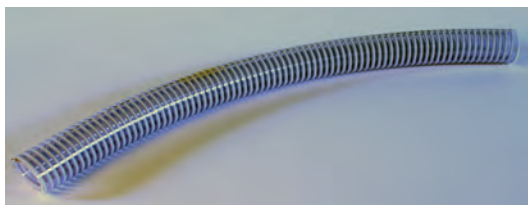




Part Name: Plastic Bowl Reg1
Part #: 9901



Part Name: 1/2" Kamlock Gasket
Part #: 11502



Part Name: 1/2" Clear Vinyl Hose
Part #: 11700



Part Name: 1/2" x 120" hose
Part #: 11705



Part Name: 1 1/2" part f male npt x male kamlock
Part #: 11900



Part Name: 1/4" male quick connector
Part #: 16000

Pathway Polymers Parts Catalog

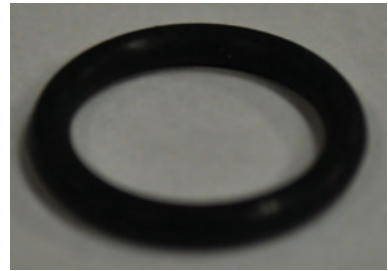
Part Name: Valve stem adapter
Part #: 16701



Part Name: 1/2" straight through coupler
Part #: 16702



Part Name: O-ring for quick disconnect coupler
Part #: 16705



Part Name: 3 inch SafeFil Needle
Part #: 18000



Part Name: 12 ga x 3 inch Hypo Needles
Part #: 18001



Part Name: 14 ga x 2 inch Hypo Needles
Part #: 18002





Part Name: 12 ga x 2 inch Hypo Needles
Part #: 18003



Part Name: 600 PSI guage bottom mount
Part #: 18300
Description: Pump A & B side needed



Part Name: 1000 PSI guage bottom mount
Part #: 18302
Description: Pressure Gauge for Graco Pump



Part Name: 300 PSI guage bottom mount
Part #: 18305
Description: Gun/Flush free block



Part Name: Push Button Pressure Check Assembly
Part #: 18307



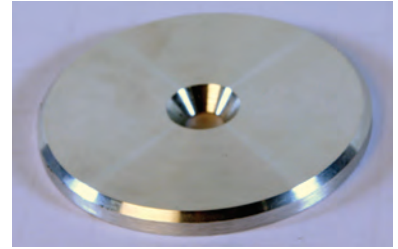
Part Name: Control Valve Assembly
Part #: 38310

Pathway Polymers Parts Catalog

Part Name: Counter Cover Tube
Part #: 38313



Part Name: Counter Cover Plate
Part #: 38314



Part Name: O-Ring retainer for control valve
Part #: 38398



Part Name: Control Valve Housing
Part #: 38421



Part Name: Plunger
Part #: 38422

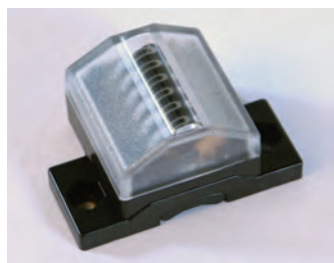


Part Name: Spring for Control Valve
Part #: 38501





Part Name: 1/4" male x 1/8" male reducer
Part #: 38546



Part Name: 7200 Mag Counter
Part #: 38568



Part Name: 7200 Oil Reservoir
Part #: 38584



Part Name: 1/2 inch Ball Valve
Part #: 38778



Part Name: Lower Cylinder Kit
Part #: 38801
Description: 207-580



Part Name: Air Motor Kit
Part #: 38802
Description: 207-385

Pathway Polymers Parts Catalog

Part Name: Displacement Rod
Part #: 38804



Part Name: Cylinder
Part #: 38805



Part Name: Stroke Counter
Part #: 38823



Part Name: Air Regulator
Part #: 38843



Part Name: Connecting Rod
Part #: 38846



Part Name: Air Motor Trip Rod
Part #: 38875





Part Name: 1/2" x 12" hose (flush free)
Part #: 38880



Part Name: 18 inch Stat Mixing Tube
Part #: 38885



Part Name: Flush Free Mixing System Complete
Part #: 40405



Part Name: Mixing Tube and Mixers
Part #: 40406



Part Name: Flush Free A part
Part #: 40407



Part Name: Tote Vent Assembly
Part #: 41700

Pathway Polymers Parts Catalog

Part Name: Seal Kit
Part #: 48409-B



Part Name: Intake Hose Assembly
Part #: 48412



Part Name: 2" x 2 1/2" Bell Reducer
Part #: 50901



Part Name: Vacuum Relief Valve
Part #: 98804





Pathway Polymers
2003 Curtain Pole Road
Chattanooga, TN 37406
800.251.7642
www.pathwaypolymers.com

Parts listed in this catalog are the most commonly ordered. If you need a part that you don't see listed in this catalog, please contact your Region Manager or Pathway Polymers.



Pathway Polymers
2003 Curtain Pole Road
Chattanooga, TN 37406
800.251.7642
www.pathwaypolymers.com