



1) Check the inspection window on the desiccant holder. If the window is blue, proceed. If the window is pink, replace the cartridge.



2) The inside of the tire must be cleaned and dried. Water, sealants, glycol, calcium chloride, soaps, bead lubricants and dirt must be removed from the tire.



3) Remove the manifold head, mixing components and fluid gun from the solvent container and wipe off any excess solvent with a dry rag. Visually check to ensure all items are free of residue.



4) Position the mixing tube with the tapered end down and insert the flat end of the first element into the mixing tube stopping one inch from the top. Insert the next element into the notch of the first element and push down. Repeat for the remaining elements. 3/4 inch mixers require four elements. 1/2 inch mixers require three.



5) Dry the solvent from the ends of the mixing tube and whip hose and apply Teflon tape to the threads.



6) Attach the mixing tube to the coupler on the manifold head and tighten.



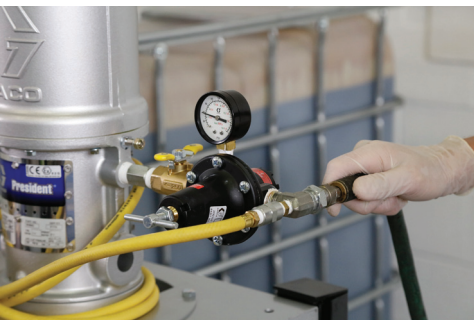
7) Attach the sample valve to the other end of the mixing tube.



8) Attach the whip hose to the other end of the sample valve and tighten all connections.



9) Complete the assembly by attaching the fluid gun to the end of the whip hose.



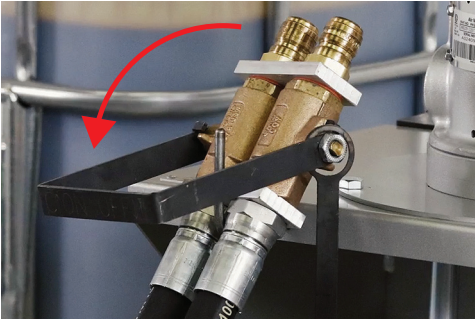
10) Attach the air hose to the air motor connector.



11) Open the white 2" bung to vent the CAT-side tote.



12) Open the ball valves on the ISO and CAT side totes.



13) Make certain the manifold hand valve is closed when turning the pump on.



14) Turn the air supply to the air motor pump on.



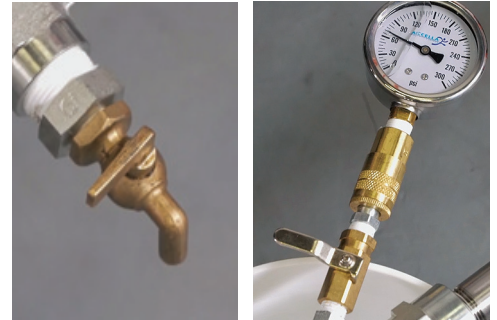
15) Apply a coat of grease to the quick connects on the manifold handle.



16) Holding the manifold handle in one hand, pull up on the female quick connects. Attach the manifold end to the handle and press down until it locks in place.



17) Attach the smart gauge to the gauge air stem.



18) Make sure the drain valve and gauge valves are closed. Open the manifold handle.



19) Run two cycles of product through the system into the waste bucket to flush the remnants of the cleaning solution.



20) Close the manifold handle.



*You are now ready to begin filling tires.*

*Please keep your manual handy so you will have access to more detailed information about safety, tire filling and troubleshooting.*